



# Software for design PV with BIM



# Available BIM software

- With the development of BIM a lot of software packages are developed catch up with the demand of designing the energy systems of the buildings in the BIM models
- This can be more efficient way, because the diversity of the data that is calculated in the software





# ACCA Solarius PV – software

- Leading software developer in the BIM and energy modeling
- Photovoltaic system design
- Support of IFC files
- Integrating photovoltaic systems with BIM models





# ACCA Solarius PV – software

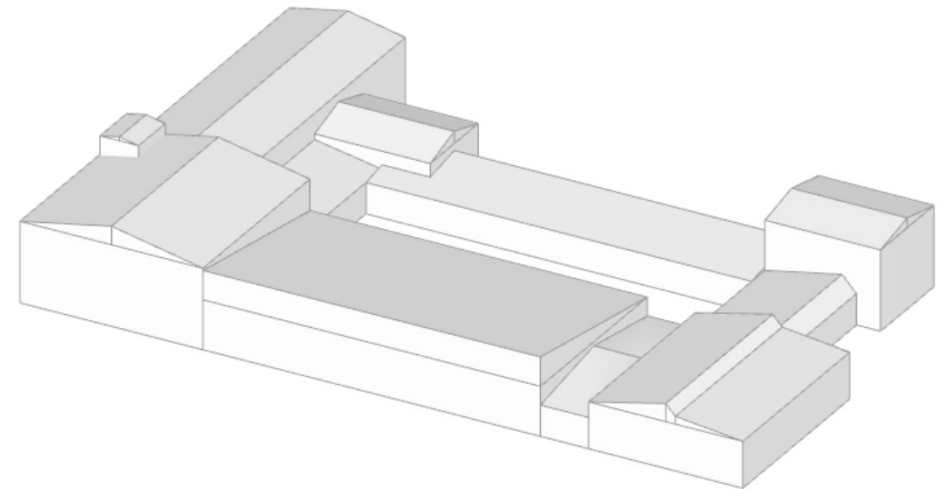
- Database of components of a photovoltaic system
- Preparation of techno-economic analysis
- Generating reports and project documentation





# ACCA Solarius PV – BIM Editor

- The BIM Editor tool is a separate program called from the ACCA Solarius software package. This program serves to draw the architecture of the building as well as the precise placement of the electrical elements of the building itself.





# ACCA Solarius PV – BIM Editor

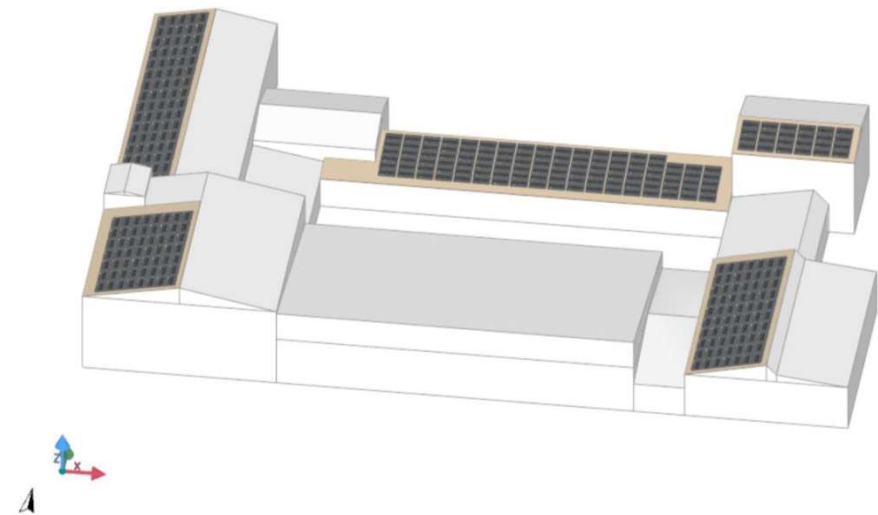
- The BIM Editor tool provides the possibility to import a BIM model from the architecture of the object designed by an architect, or if it is an existing object that does not have a BIM model, it can be drawn in the program.





# ACCA Solarius PV – BIM Editor

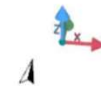
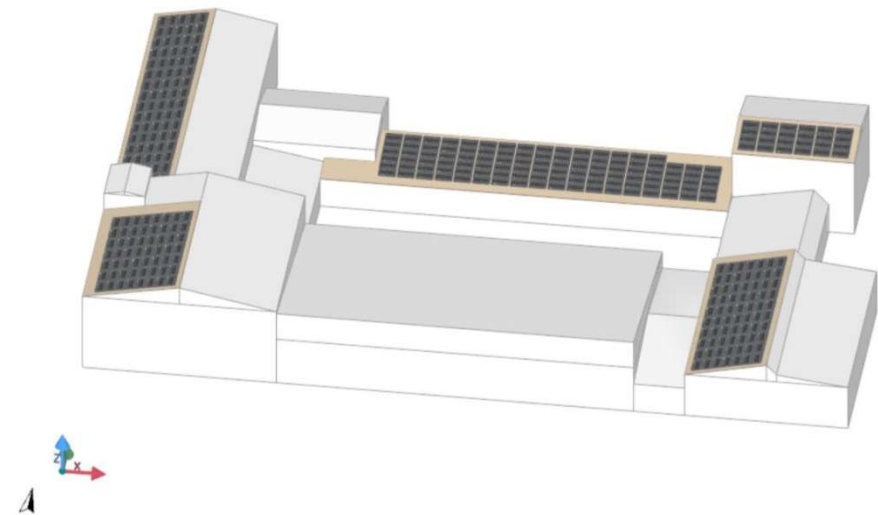
- Importing a BIM model allows you to quickly and easily project the placement of the photovoltaic modules. This tool is mostly used for facilities that are in the design phase and with the construction of the facility, a photovoltaic system can be installed immediately.





# ACCA Solarius PV – BIM Editor

- The BIM Editor tool enables the complete design of the electrical part of the photovoltaic system.
- This section includes:  
photovoltaic modules, size of inverters, system protection, size and type of cables and other small equipment.







Thank you  
for the attention